

Week 7 Passage 2

Topic: Visualizing data: airport cargo data

Source: Visual Capitalist

Total steps: 2

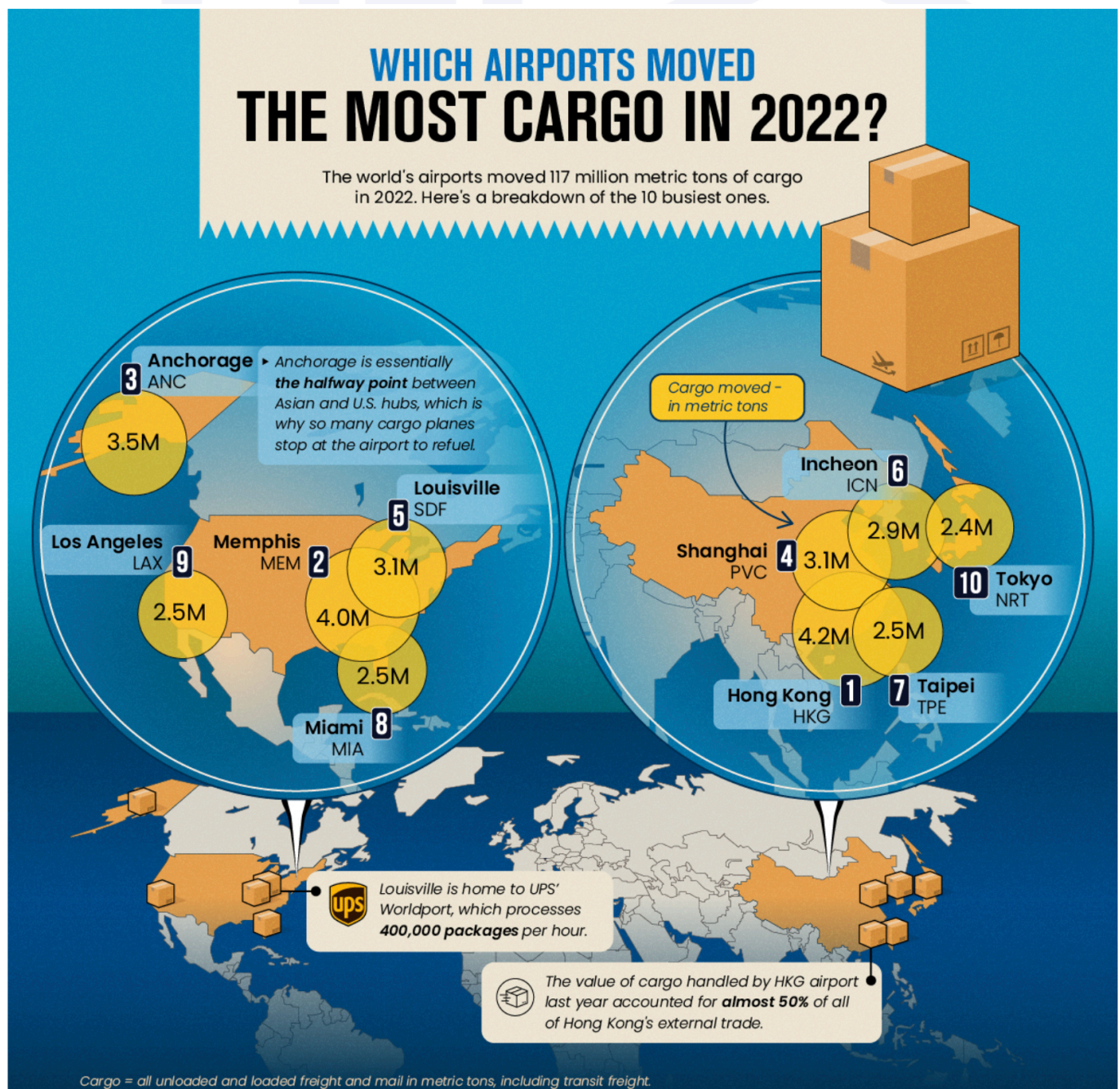
Shared assignments: 1

Step 1. Work with the new passage.

Work with the infographic to start with. See how much information you can get from it.

Then listen to the recording and follow the article to check your understanding.

Choose 1 paragraph and record your own version for practice. Share your audio file in the class group by Class 2.



Which Airports Move the Most Cargo?

From facilitating crucial international supply chains **to** ensuring the smooth delivery of personal Amazon packages, cargo shipping **is** an important part of the global economy. Total air cargo shipped measured around 117 million metric tons in 2022.

This map **uses data from** Airports Council International (ACI) **to** showcase the global airports that move the most goods.

The Busiest Cargo Airports

The world's busiest airport **in terms of** cargo is Hong Kong's, **which** has held the number one spot for almost 28 years. **Here's a look at** the ranking:

Rank	Airport	Location	Cargo (Metric Tons)
#1	HKG	 Hong Kong SAR	4,199,196
#2	MEM	 Memphis, USA	4,042,679
#3	ANC	 Anchorage, USA	3,461,603
#4	PVC	 Shanghai, China	3,117,216
#5	SDF	 Louisville, USA	3,067,234
#6	ICN	 Incheon, South Korea	2,945,855
#7	TPE	 Taipei, Taiwan	2,538,678
#8	MIA	 Miami, USA	2,499,837
#9	LAX	 Los Angeles, USA	2,489,854
#10	NRT	 Tokyo, Japan	2,399,298

Some of these busy airports are not well-known, and **none of them**, aside from LAX, rank as highly **in terms of** passenger traffic. **For example**, Anchorage ranks in the top 10 in cargo processed because it is cheaper for cargo carriers to stop over and refuel there, **rather than** flying nonstop from Asia to the United States.

The Memphis airport handles the most cargo in North America, **largely because of** FedEx's significant presence there. FedEx processes over 245,000 documents and 180,000 packages an hour at Memphis' airport.

On top of being home to UPS' Worldport, the world's biggest fully automated package processing facility, Louisville **is also** central to other transport routes in the United States. Packages come into this hub and then head out on the many highways and railways, **as well as** the Ohio River, which connects to the Mississippi River, one of the country's main waterways for barge transit.

Cargo Shipment

Nearly every airport **has seen significant increases in** the amount of cargo moved year-over-year, **with** numbers now rising above pre-pandemic benchmarks.

In Hong Kong, goods movement via air travel is integral to the economy. Around half of the entire region's external trade went through the airport in 2022.

Cargo transit **is inherently important to** the global economy. Around \$6 trillion worth of goods move through airports annually, **representing approximately** 35% of world trade.

Step 2. Work with the targeted language

Pay attention to the structures (think, can you actually use them?):

1. From ASPECT 1 to ASPECT 2, STH is....
2. In terms of <aspect> , STH
3. ...use data from ...to <do>
4. Here's a look at...
5. Some of are...; all of them are ...; none of them are
Both of these are ...; either of these is; neither of them is
6. <Do A> rather than <B / do B>
7. On top of <point 1>, ...is also <point 2>
8. Nearly <do / have done/ did>, with <point 1> <doing>
9. ...is inherently important to...

Pay attention to these lexical items:

facilitate

ensure

smooth delivery of

measure

showcase

handle

significant presence

be fully automated

be central to

be crucial to

be key to

be integral to

amount of

rise above the benchmark

<sum of money> worth of <object/action>